

pentacle
& theatre

AND

Erik and Laura
Davis

PROUDLY PRESENT

MAMMA MIA!

MUSIC AND LYRICS BY
BENNY ANDERSSON
BJÖRN ULVAEUS

AND SOME SONGS WITH STIG ANDERSON

BOOK BY **CATHERINE JOHNSON**

ORIGINALLY CONCEIVED BY **JUDY CRAYMER**

MAMMA MIA! WAS ORIGINALLY PRODUCED IN LONDON
BY JUDY CRAYMER, RICHARD EAST AND BJÖRN ULVAEUS
FOR LITTLESTAR IN ASSOCIATION WITH UNIVERSAL

ADDITIONAL MATERIAL & ARRANGEMENTS
MARTIN KOCH

MUSIC PUBLISHED BY UNIVERSAL MUSIC PUBLISHING GROUP AND
EMI GROVE PARK MUSIC INC. AND EMI WATERFORD MUSIC INC.

DIRECTED BY
ROBERT SALBERG

MARCH 1 to 23, 2019



Presented through special arrangement with Music Theatre International (MTI). All authorized performance materials are also supplied by MTI (mtishows.com).

MAMMA MIA!

CAST

Sophie Sheridan	Emma Thurston
Donna Sheridan	Kirsten Manning
Sam Carmichael	Ken Hermens
Bill Austin	Chris Davidson
Harry Bright	Matthew Bailey
Sky	Dylan Bauman
Tanya	Kelli Jaecks
Rosie	Geri Lyne Greeno
Lisa	Ellie Knoll
Ali	Kristen Crichlow
Pepper	Isaiah Nixon
Eddie	Brett Hochstetler
Sky's Friends/Nightmare Chorus	Ben Arnst, Grant Burton, Myles Fisher, Nicholas D.G. Hikes, Gavin Hughes
Sophie's Friends/Nightmare Chorus	Jade Allen, Ellie Bertholf, Olivia Pereyra, Mia Poston, Lilla Seitz, Olivia Sweeney
Women's Ensemble/Taverna Workers	Alison Fisher, Jen Haas, Jennifer Meyers, Victoria Wilson
Men's Ensemble/Taverna Workers ..	Shawn Black, Mathew Huffman, Ron Jaecks, Vidal Pena

TIME & PLACE

A Taverna on a Greek Island some time after 1999.

There will be a 20-minute intermission between acts.

The videotaping or other video or audio recording of this production is strictly prohibited.

Mamma Mia! is presented through special arrangement with Music Theatre International (MTI). All authorized performance materials are also supplied by MTI, 423 West 55th Street, New York, NY 10019. Tel.: (212) 541-4684 Fax: (212) 397-4684 www.MTIShows.com

PRODUCTION STAFF

Director	Robert Salberg
Assistant Director	Jill Sorensen
Vocal Director	Jeff Witt
Choreographer	Dee Montgomery-Smith
Assistant Choreographer	Melody Mae Smith
Rehearsal Accompanist	Jon Stuber
Costumer	Mary Ann Potter
Costume Assistants	Shawn Black, Jen Haas, Alison Holmes Fisher, Jenn Meyers
Technical Director	Chris Benham
Stage Manager	Beth Cummings
Prop Master	Lisa Godwin
Audio Chair	Michael McIntosh
Sound	Dani Potter
Make up/Hair/Wigs	Lindsay Schuh
Crew/Props	Kelen Kiluwe
Crew	Jacob Rybloom
Light Design	Chris Benham, Robert Salberg, Jill Sorensen
Light Hang	Anna Burger, Beth Cummings, Owen Hoelter
Light Operator	Owen Hoelter
Spotlight	Anna Burger
Spotlight	Leo Elkington
Set Design	Chris Benham, Robert Salberg
Set Construction	Beth Cummings, David Mansfield, Jacob Rybloom, Rob Sim, Joseph Wilson, cast and crew
Board Liaison	David Ballantyne
Poster Design	Bill Helwig
Program Design	Carlee Wright
Photography	Lonnie and Kim Thurston
Opening Night Caterers	Black Sheep Catering
Pre-show announcements written by	Chris Davidson, Nicholas D.G. Hikes, Ellie Knoll, Emma Thurston

Special Thanks:

Central High School ★ Children's Educational Theatre
 Olivia Caudell ★ Salem Paint Company ★ Shelby Conway
 South Salem High School



**Old friends
and new...**

Celebrate 65 years of Pentacle's success

There is something for everyone
at this Pentacle Anniversary event!

Saturday, July 13, 2019

Salem Convention Center

Two ticket prices available:

\$50.00 dinner & program at 6:00 p.m.

\$25.00 dessert only & program seating at 7:30 p.m.

Program begins at 8:00 p.m.

Tickets available now online at
pentacletheatre.org

or by visiting our ticket office at
145 Liberty St. NE, Suite 102 in downtown Salem.
503-485-4300

*pentacle
& theatre*

ACT I

I Have a Dream (prologue)	Sophie
Honey, Honey	Sophie, Ali, Lisa
Money, Money, Money	Donna & Ensemble
Thank You for the Music	Harry, Bill, Sam, Sophie
Mamma Mia	Donna, Harry, Bill, Sam & Ensemble
Chiquitita	Rosie, Tanya, Donna
Dancing Queen	Rosie, Tanya, Donna
Lay all Your Love on Me	Sky, Sophie, Pepper, Eddie & Friends
Super Trouper	Donna, Tanya, Rosie & Women
Gimme, Gimme, Gimme	Lisa, Ali, Sophie, Sam, Bill, Harry & Women
The Name of the Game	Sophie & Bill
Voulez Vous	Ensemble

ACT II

Under Attack	Sophie & Nightmare Chorus
One of Us	Donna
S.O.S.	Sam & Donna
Does Your Mother Know?	Tanya, Pepper, Harry, Bill, Rosie, Lisa, Ali, Bill
Knowing Me, Knowing You	Sam
Our Last Summer	Donna & Harry
Slipping Through my Fingers	Donna & Sophie
The Winner Takes it All	Donna
Take a Chance on Me	Rosie & Bill
I Do, I Do, I Do	Sam, Rosie, Tanya, Donna & Ensemble
I Have a Dream	Sophie & Ensemble

DIRECTOR'S NOTE

Welcome to Pentacle's production of *Mamma Mia!*

A HUGE thank you to our show sponsors Erik and Laura Davis! I SO appreciate their support of the shows I have directed over the years. Their sponsorship of Pentacle Theatre makes much of what we accomplish possible!

It's time for some insight on how exactly we got to *Mamma Mia!* For all intents and purposes, you should be waiting with anticipation to watch the hilarious Mel Brooks musical *The Producers*. In March of 2018, I proposed three musicals to the Pentacle board, they selected *The Producers* and for the past 10 months I have been working to bring that show to life. I prepared for auditions, talked with designers, worked on a set design, lined up a production team, we were ready to hit the ground running on December 8. Sadly, we held auditions and the stars did not align. Putting together a show is like a puzzle and we were missing LOTS of pieces! So, we spent the next 48 hours contacting hundreds of people in an effort to fully cast the show.

The following week, I met with the Pentacle board and we talked about options. My message was clear, not only did we have a small turn out for auditions, we were unable to recruit any additional actors, and time was of the essence. My personal integrity told me it was in the best interest of all involved if we changed shows. Trust me when I say NO director wants to say those words. It would mean I'd be devoting most of my winter break to preparing to do the equivalent of turning my theatrical world upside down—however, I remained positive. While the timelines would be tight, it was still doable.

The board weighed their options and agreed a pivot to a different show was needed, and thus we secured the rights to *Mamma Mia!*, held another three rounds of auditions, rehearsed for eight weeks and now, here we are!

The actors, patrons and community response to changing shows was overwhelmingly positive! It was the perfect infusion of energy we needed! More than 60 people auditioned for *Mamma Mia!* As I write this, we have sold 80 percent of the tickets for our entire run two weeks before opening night, with an added sing a-long to benefit the



education committee—it really all came together in such a serendipitous way. I have been SO impressed with the energy and work ethic of this cast. Their overwhelmingly positive attitudes and mutual support of one another has been a dream from a director's perspective.

In all honesty though, NONE of this would have been possible without the tremendously supportive production team that I have surrounded myself with. They stepped up in a big way knowing this transition COULD be challenging, but they have made it seamless. My deepest thanks and gratitude go out to the following people, who have constantly had my back and supported me not only in our *Mamma Mia!* journey, but in many aspects of my life: Jill Sorensen, Jeff Witt, Mary Ann Potter, Dani Potter, Jon Stuber and Dee Montgomery-Smith. I am forever in debt to them.

And a special acknowledgement of Chris Benham who has helped bring one of my Pentacle dreams to life—a set that allows us to use the actual theater floor. Ever since directing my first Pentacle show in 2008, I have wanted to direct a show with no traditional "Pentacle stage." Chris has designed a beautiful set, that has exceeded my expectations of what directing on the floor might actually look like. Thank you, Chris!

The almost last-minute change of shows is extremely rare in Pentacle history. But we realized trying to stage *The Producers* would not serve our theatre, our actors, our patrons or our community. The process of moving to *Mamma Mia!* is an example of how organizations can and should be fluid in their strategy. No, I am not suggesting we regularly change productions "just because we can't cast it" (the problem ran deeper than that).

What I am suggesting is that we do our work with purpose and integrity. We speak up and voice concerns, regardless how they may be received and we as leaders think of creative and innovative solutions in times of chaos to find the best solution. Let's get "unstuck" from our rigid approach to problem solving and really weigh the pros and cons of the toughest decisions. I am advocating against doing what's easy with mediocre success. Afterall, often the best solutions require more of us as people.

— Robert Salberg



Photos by Lonnie and Kim Thurston

CAST & CREW

Robert Salberg

Director



Robert has been the Drama, Health & Fitness teacher at Howard Street Charter School since 2002. He is also the Executive Director of Salem's own Children's Educational Theatre (CET), a position he has held since 2003.

Robert has been an active member of Pentacle Theatre since 2001. Most recent stage credits include *Old Man Strong/Hot Blades Harry* in *Urinetown the Musical* and *Will Parker in Oklahoma!* His directing credits at Pentacle include *Little Shop of Horrors*, *The Diviners*, *Seussical*, *Annie* (2010 fundraiser), *Fiddler on the Roof*, *RENT*, *Spelling Bee*, *Legally Blonde*, *Les Misérables*, *Young Frankenstein*, *9 to 5* and *Spamalot*. Robert won "Dancing with the Salem Stars" in 2015, a title held by cast member Kelli Jaecks (2014). He's a certified Crossfit Trainer at Crossfit Salem, a daily runner, Hood to Coast competitor and the assistant Cross Country Coach at South Salem High School.

Jill Sorensen

Assistant Director



Jill directed the 2018 production of *Calendar Girls*. Her Pentacle Theatre production team credits include *Little Shop of Horrors*, *The Savannah Sipping Society*, *Spamalot*, *Jesus Christ Superstar*,

Seussical, *9 to 5*, *Urinetown*, *The Addams Family*, *Young Frankenstein*, *You're A Good Man Charlie Brown* and *Into the Woods*. Jill is currently a member of the Pentacle Theatre Governing Board. She served as board liaison to the Pentacle Play Reading Committee during the past two seasons. Jill is a COO at Catholic Community Services. She lives in Salem with her dog, Baguette. She is thankful to her daughters, Emmalena and Hope, for encouraging her back into theater.

Want to become a Pentacle volunteer?

Visit www.pentacletheatre.org

LAW OFFICE OF EDEN ROSE BROWN

Supporting the Arts since 1979

ESTATE AND LEGACY PLANNING

Preserving family wealth
and harmony
for generations

*"It's not about what you own,
it's about what you value . . ."*

Salem | Portland | Bend 503-581-1800 www.EdenRoseBrown.com

Dee Montgomery-Smith

Choreographer



Dee has extensive dance and theater experience. Her first show at Pentacle was *Celebration* directed by Katie Lindbeck. She was in the dance company Dart Dance Theater directed by Barbara Ominski. She has

choreographed at high schools, private dance studios, Children Educational Theatre and colleges throughout the state since 1976. She created a dance company at Chemeketa Community College. She has choreographed many musicals and choirs, the most recent being *The Little Mermaid* at South Salem High and Pentacle's fundraiser at the Elsinore. When not on stage you will find her rockhounding or crocheting.

Melody Mae Smith

Assistant Choreographer



While this is Melody's first show at Pentacle, she is no stranger to the stage. At McNary High School she was part of *Little Shop of Horrors*, *Urinetown*, *Legally Blonde* and *Beauty and the Beast*. Her senior year she helped

choreograph two dances in their version of *Romeo and Juliet*, set in the 40s. She was inspired and then encouraged by her peers to choreograph "Cell Block Tango" from *Chicago* for the International Thespian Society conference and competed to state level with her piece. This was when she knew she

wanted to continue choreographing. Since then she has assisted Dee with *The Little Mermaid* at South Salem High School, and now *Mamma Mia!* As the daughter of Dee Montgomery-Smith, it's only natural that Melody has danced for more than 17 years now, and with a guitarist dad, it's no surprise she also plays guitar and sings in her free time.

Jeff Witt

Vocal Director



Jeff has been active at Pentacle Theatre for more than 25 years. He has participated in various capacities in more than 30 productions. He directed *Brigadoon* and *A Star is Born* and co-directed *City of Angels*

and *The Savannah Shpping Society*. He assistant directed *A Thousand Clowns* and Pentacle's first production of *Lend Me a Tenor*. He was vocal director for *Once Upon a Mattress*, *Into the Woods*, *The Secret Garden*, *You're a Good Man Charlie Brown*, *Urinetown*, *Jesus Christ Superstar* and *Cabaret*. Favorite roles include Seymour in *Little Shop of Horrors*, Igor in *Young Frankenstein*, Gomez Addams in *The Addams Family*, Jean Valjean in *Les Misérables*, Archibald Craven in *The Secret Garden*, Horton in *Seussical the Musical*, Angel in *Rent*, William Barfee in *The 25th Annual Putnam County Spelling Bee* and Lord Fancourt Babberly in *Charley's Aunt*. Jeff has his B.S. in vocal performance and choral conducting with a minor in theater and an M.A.T. in choral conducting from Oregon State University. He is currently the Vocal Music and Drama Director at Central High School in Independence. He lives in Monmouth with his husband Jon Stuber.

CAST & CREW

Jade Allen

Sophie's Friend/Nightmare Chorus



This is Jade's first show at the Pentacle Theatre, but she has performed in a number of productions at South Salem High School including *Thoroughly Modern Millie*, *The Diviners* and *Our Town*. She was the

makeup coordinator for *A Christmas Carol* and *The Little Mermaid*, and house manager for *Romeo and Juliet*, also at South Salem High School.

Ben Arnst

Sky's Friend/Nightmare Chorus



This is Ben's first show at the Pentacle Theatre. Other theater-related work experience includes three years of theater at Sprague High School including *Fiddler on the Roof*, *Godspell* and *Anything Goes*.

Matthew Bailey

Harry Bright



A recent transplant to Salem from Ft. Worth, Texas, this is Matthew's first show at the Pentacle Theatre. Other theater-related experience includes as as a music director and two singing roles in *The Brothers*

Grimm Spectaculathon: The Musical

by Don Zolidis. He also has six years experience as a music teacher and loves playing volleyball.

Dylan Bauman

Sky



Dylan, whose previous Pentacle experience includes *The Little Mermaid*, works at Dutch Bros in Monmouth and is a full-time student at Chemeketa Community College.

Ellie Bertholf

Sophie's Friend/Nightmare Chorus



Ellie's previous work at Pentacle includes in the ensemble in *Beauty and the Beast*, and doing makeup for *Seussical* and *The Little Mermaid*. Other past theater experience includes as a maid and in the ensemble of *The Little*

Mermaid at South Salem High School. She was also an actor at CET and in a few shows at Brush Creek Playhouse in Silverton. Ellie frequently does technical work for productions, and was head of costumes for South Salem High School's production of *A Christmas Carol*. She has done hair and stage makeup designs for three years at CET and in the Salem area. A senior at South Salem High School, Ellie is involved in lots of clubs and community service activities, and is a member of International French Honor Society. She worked as a makeup TA last summer at CET, and will move up to teacher this summer.

Shawn Black

Men's Ensemble/Taverna worker



Shawn is very excited to be in his first Pentacle Theatre production. This is first time on the stage in more than seven years; his favorite role of the past was Senex from *Funny Thing Happened on the Way to the Forum*.

His is the father of six wonderful children and has six grandsons. When he is not on the stage, he enjoys antique shows and yard sales searching for that item that will get him featured on Antiques Roadshow. He sends his love to MAC: life with you is much more beautiful with you in it!

Grant Burton

Sky's Friend/Nightmare Chorus



This is Grant's first show at the Pentacle Theatre and first performance since high school where he played Juror #3 in *12 Angry Jurors*, and voiced Audrey II in *Little Shop of Horrors* at Dallas High School under the direction of Blair Cromwell.

Kristen Crichlow

Ali



While this is Kristen's first Pentacle show, her other theater-related experience includes in *Our Town* as Mrs. Gibbs, in *Arsenic and Old Lace* as Martha Brewster, in *A Midsummer Night's Dream* as Hermia and in the ensemble of

The Music Man (all performed at Dallas High School). She works as a Judicial Clerk for Marion County Circuit Court.

Chris Davidson

Bill Austin



Chris has performed more than a dozen shows for Umpqua Actors Community Theatre (UACT) in Roseburg as an actor, one as a director, and many more as a set builder and backstage help. He previously appeared in Pentacle's

2019 fundraiser *The Little Mermaid*. He has a chocolate lab named Molly and is "living the dream."



Help us save money and trees

If you are not keeping your program,
please place it in the
program recycling box on your way out

Alison Fisher

Women's Ensemble/Taverna worker



Alison is a chemistry professor at Willamette University, and she serves on the Board of Directors for Children's Educational Theatre. She lives in Salem with her husband and two very theatrical kids, who have performed in

several Pentacle Theatre productions and inspired her to audition for her very first show! She assisted with costuming for the Pentacle's recent production of *The Little Mermaid*.

Myles Fisher

Sky's Friend/Nightmare Chorus



Myles previously appeared at Pentacle in *Little Shop of Horrors* as the Audrey II puppeteer, as well as in *Beauty and the Beast*. Other theater-related work experience includes as a TA with Children's Educational Theatre

and a South Salem High thespian. Outside of theater, he enjoys ballet. He is happy to have his beautiful mother in this show with him.

Geri Greeno

Rosie



Originally from Omaha, Nebraska, Geri has been involved in theatre for over 30 years, the last 19 here in Oregon. Geri was last seen onstage as Celia in last season's *Calendar Girls*.

Favorite past roles

include Elvira in *Blithe Spirit*, Billie Dawn in *Born Yesterday*, Adelaide in *Guys and Dolls*, Nancy in *Oliver*, Sheila in *Hair*, Maria in *Sound of Music*, Inga in *Young Frankenstein*, and Woman in *Death of a Salesman*. Geri directed *Other Desert Cities*, *The Nerd* and *The Curious Savage*, and choreographed and directed *The Boyfriend*, *My Fair Lady* and *Jesus Christ Superstar* at Pentacle. Also for Pentacle, she choreographed several shows including *Guys and Dolls*, *Mary Poppins*, *Urinetown*, *9 to 5*, *Seussical*, *Spamalot*, *A Christmas Carol*, *Cabaret* and *Little Shop of Horrors*. When not spending her time at the theater, Geri works in statewide payroll for the Dept. of Administrative Services.

Jen Haas

Women's Ensemble/Taverna worker



Jen is married to her super supportive husband, Dustin and has two amazing teenagers, Anna & Joey. She works full time at Howard Street Charter School, doing her best to convince middle schoolers that math is fun.

Her introduction to theater was through her children, who have been students at

UPCOMING AUDITIONS

Fools Mar. 16

Jest a Second! May 18

More info at 503-485-4300
or online at pentacletheatre.org

Children's Educational Theatre since 2012. She is actively involved in CET, serving on their board and spending her summers with theater kids. She loves baking and cooking, traveling and spending time with her large, extended family. This is Jen's first show with Pentacle.

Ken Hermens

Sam Carmichael



Ken has been active at Pentacle Theatre since his debut as the Gentleman Caller in *The Glass Menagerie* in 1975. His musical roles have included the Hermit in *Young Frankenstein*, Thenardier in *Les Misérables* and Don

Quixote in *Man of La Mancha*. Other favorite Pentacle roles have been Brother Boy in *Sordid Lives*, Dysart in *Equus* and the Baker in *Into the Woods*. He is extremely proud to have co-directed the 2015 production of the musical *Chicago*. Ken works as the Director of English Language Arts for the Smarter Balanced Assessment Consortium.

Connecting you with your clients

Printing – Offset and Digital

Web and Technology Services

Mailing and Inserting Services

Specialty Projects and Services

SELECT
IMPRESSIONS
TOTAL VISUAL SOLUTIONS

For more information
please contact:

Renee Campbell
503-304-3525

reneec@selectimpressions.com

www.selectimpressions.com

2215 Claxter Road NE, Salem, OR 97301



Pentacle Theatre's Acting Workshop

Join skilled director and actress Jo Dodge in a fun, hands-on theater workshop exploring the human spirit.

11-Week Term — Only \$105

Location: Pentacle Theatre lobby
Information: 503-485-4300 or pentacletheatre.org

Nicholas D.G. Hikes Sky's Friend/Nightmare Chorus



Nicholas is delighted to be able to return to Pentacle Theatre for the third time. He was last seen on stage as Edgar Allan Poe in the world premiere of *Poe the Musical*. Previous credits include *Cabaret*, *Beauty and the Beast*, *Little Shop*

of Horrors, *Urinetown*, *Hamlet* and *Our Town*. For him, there is nothing more magical than that moment, right as the lights go down, and the crowd is waiting in silence with anticipation for the show to begin. It's a moment full of hope, and full of possibilities. So he'd like to thank the audience for coming, and for believing, as he does, that there is nothing more important or special as live theatre.

Brett Hochstetler Eddie



Brett is excited to be back on the Pentacle Theatre stage after playing Chef Louis in Pentacle's 2019 fundraiser *The Little Mermaid*. Other Pentacle credits include *Fiddler on the Roof*, *Legally Blonde*, Albert Lennox

in *The Secret Garden*, Grantaire in *Les Misérables*, Linus in *You're a Good Man, Charlie Brown*, The Monster in *Young Frankenstein*, Fester in *The Addams Family*, Officer Lockstock in *Urinetown*, Horton in *Seussical* and Sir Robin in *Spamalot*. He was recently elected to the Pentacle Theatre Governing Board and is ready to volunteer off the stage as much

as he does on it. Brett works in parts and small engine equipment sales at Rickreall Farm Supply. Brett is forever grateful for the love and support of his family and is ecstatic to become an uncle for the second time, and he loves his Lord and Savior Jesus Christ, who gave him the gift and desire to perform.

Mathew Huffman Men's Ensemble/Taverna worker



This is Mathew's first show at Pentacle, but he previously took two theater classes at Rogue Community College, participated in reader's theater at The Majestic in Corvallis and was part of six musicals and two plays between

The Majestic and Albany Civic Theater. He has helped with set builds and final set detailing across several productions. Musical theater is a major hobby for Mathew, but he also enjoys mathematics, authoring word puzzles and drawing.

Gavin Hughes Sky's Friend/Nightmare Chorus



This is Gavin's first show at the Pentacle Theatre, but he has performed in a number of theatrical productions with various other companies including as Buddy in *Elf Jr.* at Howard Street Charter School, as Friar

Lawrence in *Romeo and Juliet* at South Salem High School and as Grandpa Joe in *Willy Wonka Jr.* and in the Ensemble of *Once On This Island Jr.* with Children's Educational Theatre. He was also a stage

hand and assisted with set building for *A Christmas Carol* at South Salem High School.

Kelli Jaecks

Tanya

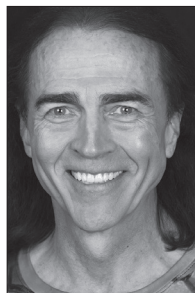


Kelli most recently stomped the boards at Pentacle in *Calendar Girls* as Chris. Other Pentacle credits include *9 to 5* as Violet Newstead, *Chicago* as Roxie Hart, *Legally Blonde* as Brooke Windham, *A Midsummer*

Night's Dream as Titania and *Seussical* as Mayzie LaBird. She also appeared on The Verona Studio stage in *Love, Loss and What I Wore*, in addition to being part of the Hayloft Reader's Theater. Kelli is the red carpet host of the Crystal Apple Awards presented by the Salem-Keizer Education Foundation. Proud to call Salem her home, she works as a speaker and consultant specializing in women's health and workplace burnout prevention. She recently published her first book: *Martinis and Menopause*. Kelli dedicates this show to Pepper — "Does your Mother Know?"

Ron Jaecks

Men's Ensemble/Taverna worker



Ron is no stranger to Pentacle Theatre. He is SuperFan extraordinaire, especially when his favorite actor, Lovie is performing. Each night of *Seussical*, *Legally Blonde*, *Midsummer Night's Dream* and *Chicago*,

he chose a different character to inspire his SuperFan outfit. He loves that Robert Salberg cast him for his Pentacle Theatre debut. He is grateful for the entire production team and the fabulous cast for their warm welcome as SuperFan becomes part of the show! After a 35-year career as a general surgeon, he will now be full-time SuperFan of Lovie, Pentacle Theatre, The Dodgers, The Packers, and of other good things in life — family, friends, tennis, SCUBA, magic and new adventures.

Want to become a Pentacle volunteer?

Visit www.pentacletheatre.org

Rich Ford: Broker, ABR, CRS, e-PRO, GRI Windermere Pacific West Properties, Inc.

Mobile: (503) 510-9583 Office: (503) 391-1350

E-mail: RichFord@Windermere.com

Website: www.RichFord@myWindermere.com

Serving Salem/Keizer and the surrounding areas.


Windermere
Pacific West Properties, Inc.



Hear Ye! Hear Ye!

Attention all high school graduating seniors!

Pentacle Theatre's Education Committee is pleased to announce that applications are being accepted for the Bill and Phyllis Cross Pentacle Theatre Scholarships for pursuit of higher education and the arts. Three scholarships are available to qualifying high school seniors:

- The Jo Dodge Performing Arts Theatre Scholarship
- The Tony Zandol Technical Arts Theatre Scholarship
- The Tom Ulmer Theatre Service Scholarship

To qualify, high school seniors must be graduating in the spring of 2019 and plan to attend college in the fall of 2019, whether a community college or a four-year institution. Applicants will be asked to demonstrate their experience with theater education as well as other theater involvement, including service at Pentacle Theatre. Additionally, applicants will need to report on their academic and professional goals and any special considerations of financial need. Lastly, applicants will be asked to submit a personal statement describing the impact of theater in their lives and their own contributions to the arts. For complete qualifying information, please refer to the application.

Applications are available now. You may download the application from the Pentacle Theatre website (www.pentacletheatre.org), pick up one from a local drama teacher or contact the Education Committee chair, Robert Salberg at 971-208-2799 or salberg.robert@gmail.com.

Scholarship applications are due May 1, 2019, and recipients will be notified by May 31, 2019.

The fund, established in memory of Bill and Phyllis Cross, honors these two individuals who were awarded Pentacle Theatre's highest honor of lifetime membership. While at Pentacle Theatre and during Phyllis' career as a high school drama teacher, the Crosses served as mentors and role models, inspiring those around them in performing and technical theater arts.

Jo Dodge, also a Pentacle Theatre lifetime member, has acted and directed in numerous Pentacle Theatre productions, taught acting workshops at the theater through Chemeketa Community College since 1981, and shared her love of theater with hundreds of Pentacle Theatre volunteers for 25 years.

The technical arts scholarship is awarded in honor of Tony Zandol, Pentacle Theatre's former resident designer and first professional production director.

The late Tom Ulmer was a tireless creator and educator of theatrical arts at Pentacle Theater, Children's Educational Theater and Salem-Keizer School District. Pentacle Theater honors his memory by awarding scholarship funds to a student who overcomes obstacles to give extraordinary time and effort to be involved in theater.



Ellie Knoll

Lisa



Ellie last appeared at Pentacle in *Distracted* as Sherri. She was also in *Cabaret* as Helga and in the ensemble of *Jesus Christ Superstar*. Last summer she worked at Theatre 33 with their summer workshop series. Currently, she

works at Crossler Middle School in the main office, but she hopes to one day become a famous fortune cookie writer. She is very thankful to her family and friends for being incredibly supportive through this production.

Kirsten Manning

Donna Sheridan



Kirsten is married to her fabulous husband, Jon, and is mother to the amazing Georgia, Finn, and Jasper. She loves singing, Netflix, musical theater, and spending time with her amazing tribe of friends. When she's not on stage or at

rehearsal, she is a reading specialist at Hoover Elementary. She spends a lot of time driving carpool, and singing at the top of her lungs in order to embarrass her offspring. She is so proud of the hard work this amazing cast has put into *Mamma Mia!* and is glad to be part of it all!



CHILDREN'S EDUCATIONAL THEATRE

www.cetsalem.org

**Acting • Singing • Dancing • Improv
Set & Stage Design • Lighting & Sound
Costuming • Make-up & much more!**

***Our 2019 Season runs
from June 24 - July 27***

REGISTER ONLINE TODAY!

***PLUS! CET now partners with SKEF for a
full day of onsite aftercare and activities!***

Enriching Kids' Lives Through Theatre Arts!



Honoring the generous individuals who make a provision
in their estate plans for Pentacle Theatre:

Susan Elliott

Pamela Abernethy & Chris Fletcher

Linda Gilbert

Ed Kramer

Louise Larsen

Jeanne M. Miller

Laurelyn R. Schellin

BRIGHT LIGHTS SOCIETY

In Memoriam:

Virginia Choate

Larry Roach

If you have included Pentacle Theatre in your estate plans, we'd like to know and honor you here. Please contact Executive Director Lisa Joyce at 503-485-4300 or lisa@pentacletheatre.org

PENTACLE THEATRE LIFETIME MEMBERS

Every five years the Pentacle Theatre Governing Board honors as Lifetime Members five people who have been active in Pentacle Theatre for at least 20 years. We also remember fondly those Lifetime Members who are no longer with us.

LIFETIME MEMBERS

Pamela Abernethy
Dick Bond
Benny Bower
Robin Bower
David Cristobal
Maggie Dayton
Jo Dodge
Chris Fletcher

Ron Fox
Ken Hermens
Robert Herzog
Cec Koontz
Louise Larsen
Dave Leonard
Katie Lindbeck
Marian Milligan

Debbie Neel
Alice Norton
Jeff Sanders
Pat Schmidt
Ed Schoaps
Susan Schoaps
Eloise Smith
Larry Stevens

Kathy Straton
Faye Pitman Trupka
Cherie Ulmer
Madison Vick
De Zajic
Tony Zandol

IN LOVING MEMORY

Wayne Ballantyne
Dean Bartell
Jack Bellamy
Dr. E.B. Bossatti
Edith Bossatti
Larry & Virginia Choate
Ken Collins

Bill Cross
Phyllis Cross
Dave Davis
Rose Ann Hansell
Mrs. Ray Loter
Peg Pink
Bob Putnam

Margaret Ringnald
Murco Ringnald
Larry Roach
Dick Schmidt
Helen Shepard
Meryl (Bill) Smith
Barbara Sullivant

Tom Ulmer
Claytene Vick
Stephen Warnock
Rollie Zajic

Jennifer Meyers

Women's Ensemble/Taverna worker



Jennifer has been involved with Pentacle since 1991 both on stage and backstage. She previously worked on *Mary Poppins, 9 to 5, Seussical, Jesus Christ Superstar* and *A Christmas Carol*. She has been teaching in Salem for 21 years.

Olivia Pereyra

Sophie's Friend/Nightmare Chorus



Olivia's first show with Pentacle was the 2019 fundraiser *The Little Mermaid*. She is a senior at Sprague High School. Outside of school and theater, she's part of the CTEC Robotics Team and in Girl Scouts.

Isaiah Nixon

Pepper



Isaiah was part of Pentacle's productions of *Legally Blonde, Brigadoon* and *Wizard of Oz*. Other theater-related experience includes *Oklahoma!* at South Salem High School, as well as *Comedy of Errors* and *Water by the Spoonful* at the University of Oregon.

Mia Poston

Sophie's Friend/Nightmare Chorus



Mia is excited to be in her second show with Pentacle Theatre after previously being in *The Little Mermaid*. Some of her favorite theater credits include Elizabeth Bennett in *Pride and Prejudice* at Albany Civic Theater, Nancy in *Oliver!* at

Dallas High School and Anne Shirley in *Anne of Green Gables: The Musical* at SKIT Theatre. She loves all things Disney, spending time with her rescue dog Babes, and hanging out with friends. She would like to thank her family for their continued support of her theater pursuits, and hopes everyone enjoys the show.

Vidal Pena

Men's Ensemble/Taverna worker



This is Vidal's first show at Pentacle, but his previous theater experience includes as Baron Bomburst in *Chitty Chitty Bang Bang* at The Arts Integrated Ministry of First Baptist Independence. Vidal has a son named

Diego, has been a wrestling coach for 18 years and is studying Ministry at Nazarene Bible College.

Pentacle Theatre thanks

Roth's®
FRESH MARKETS
www.roths.com

for their support of our
Community Service Night

Lilla Seitz

Sophie's Friend/Nightmare Chorus



Lilla was previously seen in Pentacle's productions of *Fiddler on the Roof* as Bielke, *Les Misérables* as Young Cosette and in the chorus of *Wizard of Oz* and *Willy Wonka*. Other theater-related work experience includes

as a TA for Children's Educational Theatre. A Junior at McNary High School, Lilla is a member of Highlander Classics and Studio Productions (McNary choirs).

Olivia Sweeney

Sophie's Friend/Nightmare Chorus



Olivia previously ran the lights for Pentacle's production of *The Little Mermaid*, but this is her first time appearing on stage. She has both been on stage or worked backstage for many shows at South Salem High School, including

The Little Mermaid, *A Christmas Carol*, *The Diviners* and *Clumsy Custard*. She works at Children's Educational Theatre as a makeup teacher and coordinator, and enjoys baking and spending time with her friends and family.

Emma Thurston

Sophie Sheridan



Emma starred in *Disenchanted!* as Sleeping Beauty (Elsinore Theatre, 2018), and was seen in Pentacle's *Little Shop of Horrors* as a Doo-wop Girl. Other Pentacle credits include the Sour Kangaroo in *Seussical*

(2017), Little Sally in *Urinetown* (2016), and various ensemble and tech roles. Emma graduated in 2014 from Central High School where she starred as the Baker's Wife in *Into the Woods* (2014) and Princess Winifred in *Once Upon a Mattress* (2013). Emma works in insurance benefits and spends her free time on the stage. She is so thankful for her boyfriend, Branden, for his love and support through the late nights and busy weekends — she couldn't do this without him.

Victoria Wilson

Women's Ensemble/Taverna worker



This is Victoria's first show at Pentacle and her first full-fledged involvement in musical theatre since 2010. As a student at Dallas High School, she was the lead in *Li'l Abner* (2010), and an ensemble member in *Joseph and the*

Amazing Technicolor Dreamcoat (2009) and *Good News!* (2008). Victoria lives in Beaverton and is an account executive at WE Communications, a public relations agency. In her free time, she's a long-distance runner, frequent library patron and member of the Portland Symphonic Choir.

Support Local Theater!

To learn about sponsoring a Pentacle production, call 503-485-4300.



Western Oregon
UNIVERSITY

Together we SUCCEED



An Evening with

Ayad Akhtar

Pulitzer Prize-winning
Playwright, Screenwriter and Novelist

Tuesday, April 9

5:30 p.m. Complimentary Reception

7 p.m. Moderated Conversation

Free to the public | WOU Campus | Monmouth

wou.edu/jensenlecture



Wine Tasting Room Open

Daily 11 AM – 5 PM

March — mid-December

Pride. Passion. Pinot.

Cubanismo Vineyards

1754 Best Road NW, Salem OR | 503.588.1763

www.CubanismoVineyards.com



Salem-Keizer

(503) 370-7520

Turner-Jefferson

(503) 743-4646

Aumsville-Stayton

(503) 749-4646

Precision Towing & Recovery

SLAY BURNOUT.

Workshops to help you live
your best self at work
...and beyond.

Book Kelli to come to your workplace.

Kelli Jāecks!

Speaker • Author • Advocate

kellijaecks.com



Cherry Blossom Theatre Festival

March 8–10, 2019

3 Days, 3 Plays

9 Workshops

Downtown Salem

Save the Date!

Tickets on Sale Feb 1! SalemTheatreNetwork.org





Is it March already? The year is flying past and I feel like I haven't given nearly enough thanks and appreciation to our patrons, sponsors, donors, volunteers and staff. Surely with the coming of spring we should all look for ways to grow new and vibrant relationships, nurture established friendships and connections, and enjoy the beauty all around us.

Our current show, *Mamma Mia!*, is the perfect way to welcome spring and its promise of hope and joy. We know that you will have a hard time resisting the urge to sing along as if you feel the excitement through the ABBA-inspired storytelling.

Our next production, *Yellow*, is sure to engage audiences with its portrayal of relationships and love, family and forgiveness. We hope that you will take the opportunity to see this heart-felt story unfold on our stage.

As we move further into 2019, I want to reflect once again on everything that we are thankful for including you, our patrons. We welcome you to join us at every opportunity, including our upcoming 65th year anniversary on July 13 at the Salem Convention Center. You are the reason we love what we do, and we hope you can sense our appreciation and thanks.

Now, c'mon sunshine! Let spring begin soon!

With gratitude!

Jodi Deming

Governing Board President



pentacle
theatre

Opening Night
Meet & Greet
catered by:

BLACK SHEEP CATERING

www.blacksheeporegon.com ♦ 503-385-1909 ♦ orders@blacksheeporegon.com
2550 19th St. SE, Salem, OR 97302



Mission Statement

Pentacle Theatre provides community members a collaborative opportunity to create and experience theater in an atmosphere of respect, support and enjoyment.

TICKET INFORMATION

Tickets for upcoming productions are available at Pentacle Theatre's ticket office, 145 Liberty St. NE, Suite 102, Salem, OR 97301, or by calling 503-485-4300. Open Monday through Friday, 10 a.m.–4:30 p.m. Prices range from \$23.50 to \$34, depending on date and type of production. In partnership with Salem For All, Pentacle Theatre offers half-price tickets to individuals who have an Oregon Trail card. Handling fees may apply. Tickets are sold at the theater box office 45 minutes before each performance. Tickets are also available at pentacletheatre.org.

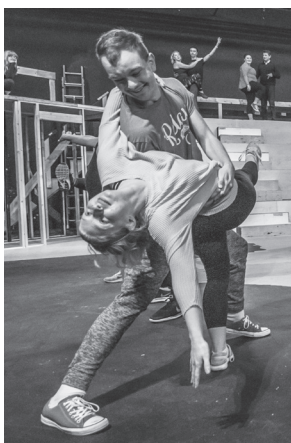


LATECOMERS POLICY

Pentacle Theatre productions will begin on time. If you do arrive late, you will be directed to the lobby where you can watch the show on a monitor. At intermission you will be ushered to an available seat. If you leave your seat during the performance, you will not be reseated until intermission. Sorry, no refunds for latecomers.

BEVERAGES AND SMOKING

Beverages are available for purchase in the lobby. Only bottled water and beverages in cups with lids and straws are allowed in the auditorium. No cans, glass bottles, or food is permitted at any time. Smoking is allowed only in designated areas on the lower deck.



PENTACLE THEATRE COURTESY

Cameras (with or without flash) and recording devices are strictly prohibited. Please turn off beepers and cell phones during the performance.

Mamma Mia! in rehearsal. Photos by Lonnie and Kim Thurston.

ADVERTISING

Advertise in Pentacle Theatre programs! All proceeds benefit Pentacle Theatre. Call the business office for more information: 503-485-4300, or stop by our business office at 145 Liberty St. NE in historic downtown Salem.

HOW TO REACH US

Pentacle Theatre tickets and business office:
145 Liberty St. NE, Suite 102, Salem, OR 97301;
503-485-4300; Mon.–Fri. 10 a.m.–4:30 p.m.

Pentacle Theatre lobby: 324 52nd Ave. NW,
Salem, OR 97304; 503-364-7200.

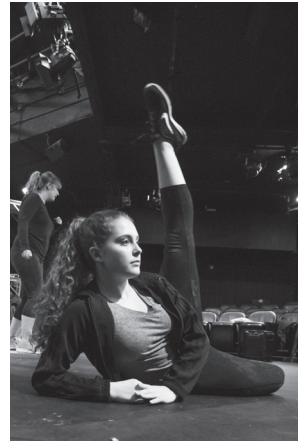
Online: pentacletheatre.org.

MANY, MANY THANKS...

To our volunteer house managers, box office personnel, bartenders, concession attendants, and ushers. Pentacle Theatre could not be successful without the continued and dedicated help of our community.

PENTACLE THEATRE GOVERNING BOARD

Pentacle Theatre is an established not-for-profit theater company, providing an eight-play season. A nine-member governing board assisted by committee chairpersons and countless other volunteers run the theater. Membership is open to all.



2019 GOVERNING BOARD AND STAFF

President	Jodi Deming
Vice President	Jon Stuber
Secretary	Mary Ann Potter
Treasurer	Jill Sorensen
Members-at-Large.	David Ballantyne, Chris Fletcher, Brett Hochstetler, Todd Logan, Lizabeth Rogers
Executive Director	Lisa Joyce
Technical Director	Chris Benham
Ticket Office Representative	Sarah Braff
Facilities Maintenance Coordinator	David Mansfield
Box Office Management Assistant	Julia Sargent

YOU MAKE THE DIFFERENCE!

List as of 2/19/2019. Ticket sales alone do not cover the cost of our productions.
Your membership and donation help make this theater possible. Thank you!

EXECUTIVE PRODUCER (\$2000+)

Autzen Foundation
Robin & Benny Bower
Debra & Maurice Collada
Compton Family Foundation
Erik & Laura Davis
Rich Ford
Diane & Michael Francis
Katie Lindbeck
Oregon Arts Commission
Barbara & Bruce W. Thompson
Walton Charitable Trust

PRODUCER (\$1000 - \$1999)

Aldrich Benefits
Allied Video Productions
B.E. Knudson Charitable
Foundation
Robin & Benny Bower
Beverly & Michael Carrick
Cherie & Craig Cline
Chris Fletcher & Pamela Abernethy
Bonnie & Zell Giles
Rhea & Rick Glantz
Brett Hochstetler
The Meltzer Family
Patrick Moser
Pioneer Trust Bank Foundation
Jalem Foundation - Pioneer Trust
Jeff Sanders
Betsy & Richard Scott

DIRECTOR (\$500)

Anonymous
Arabas Family
Sherry & Alan Bennett
Penny Blackwell
Forrest A. Colling & Jean M. Linck
Steve Gorham & Candace Reed
Bob and Marypat Hill Family Fund
of the Oregon Community
Foundation
Sally & Ray Hollemon
Nancy Hull
Lisa & Marty Johnson
Karen & Willy Kohne
Louise E. Larsen
Ken Limbocker
Richard Franklin McGinty
Alice Mary Norton
Peter & Cindy Rasmussen
Charitable Fund
Peter M. Ronai

Kathy D. Saviers
Cassie & Tom Delve Scheuermann
Katie & Matt Woolsey

ASSISTANT DIRECTOR (\$250 - \$499)

Pam Baldwin
David Ballantyne
Virginia & Alex Bourdeau
Nancy & Doug Bovee
Susan F. Christensen
Jeanne & Bill Dalton
Carolyn & Bob Engle
Pat & Chuck Fisher
Jody & Mark Gordon
Deb & David Hackleman
Linda & Dick Haglund
Lyndsey & Jerry Houser
Carolyn & Bob Howard
Sherril & Lynn Hurt
Lisa Joyce
Katie & Laslo Kolta
Susan & David Laing
Ellen Langsather
Fran Lattin
Jackie B. Miller
Nancy & Kevin Moen
Beverly North
Bonnie & Chuck Peter
Theresa & Jerald (Sam) Pietzold
Louise & Keith Putman
Kristin Ramstad
Kay & Scott Reichlin
Susanna Rose & Paul Donheffner
Harold W. Watts
Steven K. Wollenburg
Penny & Bill Wylie

LEADING ACTOR (\$100 - \$250)

Anonymous
Sandra & William Albright
Edna & Richard Anderson
Thomas P. Augustyn
Gayle McMurria & George Bachik
Gordon & Pat Bacon
Kay Balke
Katy & Charles Bayless
Sibylle & Richard Beck
Becky & Christopher D. Benton
Leora Berger
Rani H. Blumenson
Jenan & Gary Brandt
James C. Brown
Gary & Diane Buckley

Tracie B. Burger
Carol & Dennis Busby
Linda Cashin & Brian Moyer
Patricia Clark
Diane & Aaron Clingerman
Sandra & Roger Colburn
Linda D. Cress
Dennis & Barbara Curtin Miles
Edna Denton & Carel Dewinkel
Lois & Dale Derouin
John & Jane Doe
Patricia Ehrlich & James Willhite
Joyce & Mark Eklund
Pam & Roger Elliott
Oddny & Brad Everson
Beverley & Ralph Faulkner
Jean K. Fleck
Leola & David Flocker
Albert & Ginny Furtwangler
Patricia Gallagher
Robin Goodrin Nordli
Linda & Richard Grace
Mark & Allana Hadden
Walter Haight
Debby & Mark Hamlin
Lois Hanson
Ann & Dave Hanus
Lois Harris
Elizabeth & Scott Hess
Paula Hartwig
Tom M. Hewitt
Linda & Joe Hillesum
Sheila K & John L. Hochstetler
Cathleen & Dave Hockman-Wert
Gloria & Alan Holland
Billie Houghton
Gail & Roland Isaac
Kelli & Ron Jaecks
Jay Howe & Janet Gros Jacques
Michael & Diane Jaffe
Julie & Frank Jellison
Lesley Lynn Johnson
Janet & Richard Kahler
Betty & Mark J. Kasoff
Norma Jean Standlea & Hank
Keeton
Sylvia Kline
Frank & Bev Knox
Cec Koontz
Shirley Koontz
Mary & Larry Krumdieck
Susan & David Laing
Sandra & Keith Martin

YOU MAKE THE DIFFERENCE!

EXECUTIVE PRODUCER (\$2000+)

Autzen Foundation
Robin & Benny Bower
Debra & Maurice Collada
Compton Family Foundation
Erik & Laura Davis
Rich Ford
Diane & Michael Francis
Katie Lindbeck
Oregon Arts Commission
Barbara & Bruce W. Thompson
Walton Charitable Trust

Charitable Fund

Peter M. Ronai
Kathy D. Saviers
Cassie & Tom Delve Scheuermann
Katie & Matt Woolsey

Rani H. Blumenston

Jenan & Gary Brandt
James C. Brown
Gary & Diane Buckley
Tracie B. Burger
Carol & Dennis Busby
Linda Cashin & Brian Moyer
Patricia Clark
Diane & Aaron Clingerman
Sandra & Roger Colburn
Linda D. Cress
Dennis & Barbara Curtin Miles
Edna Denton & Carel Dewinkel
Lois & Dale Derouin
John & Jane Doe
Patricia Ehrlich & James Willhite
Joyce & Mark Eklund
Pam & Roger Elliott
Oddny & Brad Everson
Beverly & Ralph Faulkner
Jean K. Fleck
Leola & David Flocker
Albert & Ginny Furtwangler
Patricia Gallagher
Robin Goodrin Nordli
Linda & Richard Grace
Mark & Allana Hadden
Walter Haight
Debby & Mark Hamlin
Lois Hanson
Ann & Dave Hanus
Lois Harris
Elizabeth & Scott Hess
Paula Hartwig
Tom M. Hewitt
Linda & Joe Hillesum
Sheila K & John L. Hochstetler
Cathleen & Dave Hockman-Wert
Gloria & Alan Holland
Billie Houghton
Gail & Roland Isaac
Kelli & Ron Jaecks
Jay Howe & Janet Gros Jacques
Michael & Diane Jaffe
Julie & Frank Jellison
Lesley Lynn Johnson
Janet & Richard Kahler
Betty & Mark J. Kasoff
Norma Jean Standlea & Hank Keeton
Sylvia Kline

ASSISTANT DIRECTOR (\$250 - \$499)

Pam Baldwin
David Ballantyne
Virginia & Alex Bourdeau
Nancy & Doug Bovee
Susan F. Christensen
Jeanne & Bill Dalton
Carolyn & Bob Engle
Pat & Chuck Fisher
Jody & Mark Gordon
Deb & David Hackleman
Linda & Dick Haglund
Lyndsey & Jerry Houser
Carolyn & Bob Howard
Sherril & Lynn Hurt
Lisa Joyce
Katie & Laslo Kolta
Susan & David Laing
Ellen Langsather
Fran Lattin
Jackie B. Miller
Nancy & Kevin Moen
Beverly North
Bonnie & Chuck Peter
Theresa & Jerald (Sam) Pietzold
Louise & Keith Putman
Kristin Ramstad
Kay & Scott Reichlin
Susanna Rose & Paul Donheffner
Harold W. Watts
Steven K. Wollenburg
Penny & Bill Wylie

PRODUCER (\$1000 - \$1999)

Aldrich Benefits
Allied Video Productions
B.E. Knudson Charitable Foundation
Robin & Benny Bower
Beverly & Michael Carrick
Cherie & Craig Cline
Chris Fletcher & Pamela Abernethy
Bonnie & Zell Giles
Rhea & Rick Glantz
Brett Hochstetler
The Meltzer Family
Patrick Moser
Pioneer Trust Bank Foundation
Salem Foundation - Pioneer Trust
Jeff Sanders
Betsy & Richard Scott

DIRECTOR (\$500)

Anonymous
Arabas Family
Sherry & Alan Bennett
Penny Blackwell
Forrest A. Colling & Jean M. Linck
Steve Gorham & Candace Reed
Bob and Marypat Hill Family Fund of the Oregon Community Foundation
Sally & Ray Hollemon
Nancy Hull
Lisa & Marty Johnson
Karen & Willy Kohne
Louise E. Larsen
Ken Limbocker
Richard Franklin McGinty
Alice Mary Norton
Peter & Cindy Rasmussen

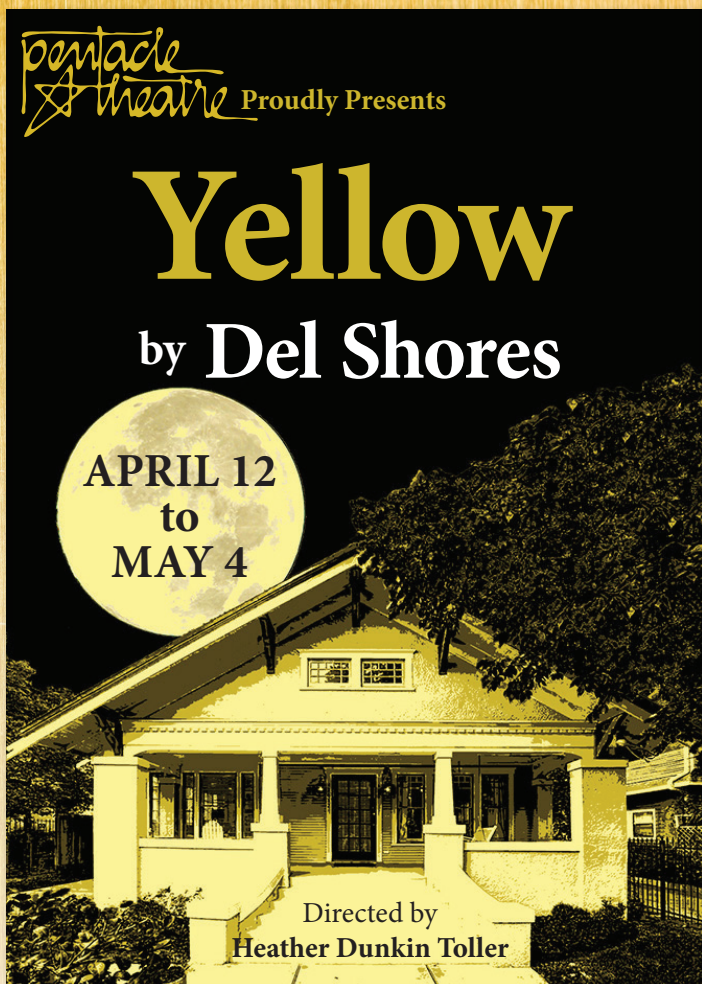
LEADING ACTOR (\$100 - \$250)

Anonymous
Sandra & William Albright
Edna & Richard Anderson
Thomas P. Augustyn
Gayle McMurria & George Bachik
Gordon & Pat Bacon
Kay Balke
Katy & Charles Bayless
Sibylle & Richard Beck
Becky & Christopher D. Benton
Leora Berger

Leave a Legacy

Make a charitable bequest to
Pentacle Theatre in your will.

UP NEXT:



We have the perfect family in Vicksburg, Mississippi: Bobby Westmoreland and his wife Kate and their two ambitious high-school aged children. Son Dayne is the football star, while daughter Gracie is an actress. Gracie's best friend is a gay boy, Kendall, at odds with his fundamentalist mother, Sister Timothea. Everything falls apart when tragedy rocks the Westmoreland family. **Yellow** explores the themes of cowardice, intolerance, family secrets and forgiveness.

Yellow, featuring the music of Salem band True North, runs Friday, April 12 through Saturday, May 4. Tickets are available at the Pentacle Theatre ticket office, 145 Liberty St. NE in downtown Salem or online at pentacletheatre.org. For more information, contact 503-485-4300.