



— Proudly Present —

DRACULA

By Steven Dietz

September 28 -
October 20, 2018

Directed By
David Ballantyne

Dracula is presented by special arrangement with
Dramatists Play Service, Inc., New York.



DRACULA

BY STEVEN DIETZ

CAST

Mina	Emily Abbey
Harker	Erik Vigeland
Lucy	Rachel Hedges
Seward	Johnathan Partridge
Renfield	Jay Howe
Van Helsing	Cliff Boyer
Dracula, as younger	Ty Hendrix
Dracula, as older	Anthony J. Redelsperger
Maid	Alaina Lesko
Vixens	Elizabeth Ming, Jewelia Owens, Kristine Rosentrater
Attendants	Robert Henry, Joe Martin

TIME AND PLACE

1897 London, England and Transylvania.

There will be a 20-minute intermission between acts.

Dracula is presented by special arrangement with Dramatists Play Service, Inc., New York. Photography and videography prohibited. *Mizfortune Waltz* used with permission of William Miles Boyce. *Nightclubbing*, by Iggy Pop; *The Upside Down*, Kyle Dixon & Michael Stein; *The Creep Out*, The Dandy Warhols; *Can't You Remember Even That*, IQU; and *Toccata and Fugue in D Minor*, JS Bach—Gert Van Hoef organist all used with permission.

Dracula in rehearsal. Photos by Lonnie and Kim Thurston.



PRODUCTION STAFF

Director	David Ballantyne
Technical Director/Set Design	Chris Benham
Assistant Director	Heathre Powell
Lighting Design	Tony Zandol
Lighting Tech	Jordan Mackor
Sound Design and Tech	Alex Irwin
Costume Design and Construction	Loriann Schmidt
Costume Assistant	Erica Tackman
Costume Construction	Karen McCarty
Makeup Design	Isaac Joyce-Shaw
Makeup Assistance	Vicki Woods
Hair	Alexa Gray
Stage Manager	Erica Tackman
Props	Kat Baird
Specialty Props	Gabriel Ramirez, Erich Schmidt
Film Design	Jade Harris and Mike Marchlewski
Fight Choreography	Paul Malone
Intimacy Consultant	Amanda K. Cole
Stage Crew	Beth Dyer Cummings
Original music	William Miles Boyce, Alex Irwin, Steve Lough, Kyle Morton, Jewelina Owens, Anthony J. Redelsperger, Jason Schwartz, Kevin Woodruff
Sound Chair	Michael McIntosh
Video Chair	Hunter Rowland
Strike Crew	Jordan Mackor, David Mansfield, Hunter Rowland, Rob Sim
Light Hang	David Ballantyne, Beth Dyer Cummings, Jordan Mackor, Heathre Powell, Erica Tackman
Set Construction	Jody Showman, Cast and Crew
Poster Design	Bill Helwig
Program Design	Laurel and Hinrich Muller
Photography	Lonnie and Kim Thurston
House Manager	Joyce Kemp
Board Liaison	Mary Ann Potter
Opening Night Caterers	Black Sheep Catering

SPECIAL THANKS

Allied Video Productions for visual arts assistance • Woolsey Family Dental for teeth



WWW.ALLIEDVIDEO.COM



allied | video
PRODUCTIONS

Allied Video Productions is proud
to provide services and support
for our local arts community.

Serving Salem for over 30 years.

Visit our website or our facebook
page to learn more!



address

2121 Front St NE
Salem, OR 97301

phone

503.363.7301

website

alliedvideo.com

DIRECTORS' NOTES • • • • •

Dracula has been seeping into my head for quite a while. I've been dying to get him out. When I read Steven Dietz's adaptation there was a calling, an open invitation to come in and explore—to play. To have fun. So we did. We wanted to create an immersive, semi-cinematic experience. Combine the visual, the auditory, and the tangible to build the tension, unleash the blood lust, enthrall with mystery, and drive the action.



David Ballantyne

This adaptation has so much room to move around creatively and bring Bram Stoker's classic story to the stage. Between lights, sound, music, practical effects, visual effects, blood, and costumes there are so many things to try. It was an honor to bring this adventure to life. The cast has given their all. The technical team has given their all. I'm so proud to have steered the vision of our production of *Dracula* and thank you for coming along. Now: Bid me enter.

David Ballantyne, director



WOOLSEY
FAMILY DENTAL

PROUD SUPPORTER OF PENTACLE THEATRE!

MATTHEW W. WOOLSEY, DMD
155 W. ELLENDALE AVE. • DALLAS, OR 97338
503-623-8010 • dallasoregondentistry.com



MAKE YOUR MARK

The Oregon Community Foundation provides tax-deductible options to help create a brighter horizon for Oregon's future.



oregoncf.org

CAST AND CREW • • • • • • • • • •



David Ballantyne

Director

David's Pentacle Theatre credits include Treves in *The Elephant Man*, Jerry in *Zoo Story* (an award-winning performance), R. P. McMurphy in *One Flew Over The Cuckoo's Nest*, Chris in *All My Sons*, and J.P. Worthing in *The Importance of Being Earnest*. He directed *Of Mice and Men* in 2016. David currently serves as president of Pentacle's Governing Board. He is a member of the marketing and fundraiser committees. He loves to volunteer at our little theater in the woods.



Heathre Powell

Assistant Director

Heathre is a long time friend of Pentacle Theatre. Her assistant directing credits include *The Elephant Man*, *Zoo Story*, *Of Mice and Men*, and *A Trip to Bountiful*. She was last seen on stage as Martha in *Who's Afraid of Virginia Woolf*. Heathre also serves on the fund-

raiser committee and has every intention of continuing to be part of the Pentacle community! She has been active in community theater since elementary school, and has a minor in theater arts from OSU. She is the mother of two lovely grown children and an elementary teacher at Myers Elementary in West Salem — Go Mustangs! — who loves live music, making art, and being outdoors. She is thankful for the love and support of her friends and family.



Emily Abbey

Mina Murray

This is Emily's Pentacle Theatre debut. Other credits include Beatrice in *Much Ado About Nothing*, Abby Brewster in *Arsenic and Old Lace*, Annie Sullivan in *The Miracle Worker*, and performing improv at Taproot Theatre Company in Seattle. In her spare time, Emily enjoys eating gluten-free pastries, making herself laugh, and doing Brazilian jujitsu. Special thanks to her three amazing roommates as well as Jessie, JP, and Hannah, who always have a listening ear.



SALEM THEATRE
NETWORK

Upcoming shows starting as low as \$15!

The Salem Theatre Network supports, promotes, and unites Salem-area theater communities.

Like/follow us on Facebook! facebook.com/salemtheatrenetwork

Aumsville Community Theatre
aumsvillecommunitytheatre.com

Wait Until Dark
October 5–21

Enlightened Theatrics
enlightenedtheatrics.org

Sweeney Todd
Oct. 10–Nov. 4

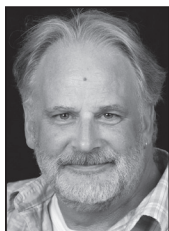
Keizer Homegrown Theatre
KeizerHomegrownTheatre.org

The Quality of Life
Oct. 18–Nov. 4

Brush Creek Playhouse
brushcreekplayhouse.org

Arsenic and Old Lace
Nov. 30–Dec. 16

Salem Theatre Network members include Pentacle Theatre, Elsinore Theatre, Keizer Homegrown Theatre, Aumsville Community Theatre, Enlightened Theatrics, Brush Creek Playhouse, Theatre 33, Children's Theatre Foundation, Willamette University Theatre Department, Heart & Shine, and Theatre Talk.



Cliff Boyer

Van Helsing

Cliff is new to Pentacle Theatre. He is returning to the stage after an absence of more than 30 years. He pursued an acting career in Los

Angeles, performing in television commercials and small plays in Hollywood. Credits include *Butterflies are Free*, *Fiddler on the Roof*, *West Side Story*, *The Rimers of Eldritch*, and *True Blues*. Cliff has worked as a business manager, teacher, and newspaper editor and reporter for Salem Monthly. Now that he is back on stage, Cliff hopes this is “the beginning of a beautiful friendship.”



Rachel Hedges

Lucy

Rachel’s first show with Pentacle Theatre was in *Cabaret* as Texas. Other credits include *Merrily We Roll Along*, *Laughing Stock*, and *Into the*

Woods. She has a variety of passions in the arts including writing, traditional art, and singing. Her work with Starbucks in West Salem only fuels her love of coffee, and she likes to spend her free time travelling or reading and visiting small coffee shops.



Ty Hendrix

Dracula, as younger Ty’s Pentacle Theatre credits include *Spamalot*, *Jesus Christ Superstar*, *Vanya and Sonia* and *Masha and Spike*, *Urinetown*, and *Young*

Frankenstein. Other credits include *Cymbeline* (produced by Struts and Frets) and *Straight White Men* (The Verona Studio). Ty works for the state government in their sustainability office. In his free time, when he’s not involved in theater, he enjoys walking in the forest and reading mundane metaphysical musings.

**TO VOLUNTEER AT PENTACLE,
CALL 503-485-4300.**



Pentacle Theatre’s Acting Workshop

Join director and actress Jo Dodge in a fun, hands-on theater workshop exploring the human spirit.

11-Week Term—Only \$105.00

Location: Pentacle Theatre lobby
For information, call 503-485-4300.

Rich Ford: Broker, ABR, CRS, e-PRO, GRI Windermere Pacific West Properties, Inc.

Mobile:(503)510-9583 Office: (503)391-1350
E-mail: RichFord@Windermere.com
Website: www.RichFord@myWindermere.com

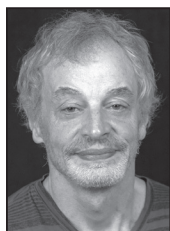
Serving Salem/Keizer and the surrounding areas.





Robert Henry
Attendant

This is Robert's fourth Pentacle Theatre show. Previous roles include Dick/Tinsworthy in *9 to 5*, the Grinch in *Seussical*, and Fezzwig in *A Christmas Carol*. Robert lives in Salem with his wife, Janet, and their three children. In his spare time (hah!), he enjoys playing guitar and working on his cars.



Jay Howe
Renfield

Jay has appeared in eight Pentacle plays, most recently as Atticus Finch in *To Kill a Mockingbird*, and also served on Pentacle's governing board, the final year as president. He played Ulysses in The Verona Studio's production of *Anna-purna*. Jay is an estate planning attorney whose passions include family, friends, run-

ning, the outdoors, and, of course, theater. He dedicates his performance and his life to his best friend and wife, Janet.



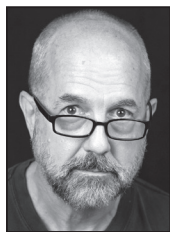
Alaina M Lesko
Maid

This is Alaina's Pentacle Theatre debut. Recent stage credits include *Christmas at the Blizzard Inn*, *The Diviners*, *Fuddy Meers*, *The Butler Did It*, and *Arsenic and Old Lace*. She has been acting since a young age and has devoted much of her adult life to bringing theater into the lives of youth the way adults sowed the love of theater in her as a child. Alaina is an avid billiard player and a surreal acrylic landscape and mixed media artist who enjoys reading magical realism and social science and history non-fiction. After many years of driving past Pentacle Theatre and dreaming of the day she could perform there, she is very excited to be in her first show with Pentacle.

The BOOK BIN



450 Court St. NE • 503-361-1235



Joe Martin

Attendant

This is Joe's second Pentacle Theatre production. His first was acting as the abusive side-show manager in *The Elephant Man*. When not

pursuing his passion for theater, Joe enjoys writing, reading, films, the outdoors, and good company. He is the father of two successful daughters and lives in Salem.



Jewelina Owens

Vixen

Jewelina is new to Pentacle Theatre. As a born and raised musician, she is no stranger to the stage or the "dark imaginings" of this world. We

can usually find her with a microphone or violin in her hands, teaching Salem's youth or performing original pieces across the country. When *Dracula* came to Pentacle



Elizabeth Ming

Vixen

At Pentacle Theatre, Elizabeth appeared in 1984, worked backstage for *The Diary of Anne Frank*, and was sound tech for *Noises Off*.

Other stage credits include Mary Bennet in *Pride and Prejudice*, Bette in *Heaven Can Wait*, Gregory in *Romeo and Juliet*, and Nina in *Hearts Like Fists*.

Pentacle Theatre thanks

Roth's® FRESH MARKETS

www.roths.com

for their support of our
Community Service Night.



Wine Tasting Room Open

Daily 11 AM – 5 PM

Salsa Lessons

3rd Saturdays • 5 PM

Pride. Passion. Pinot.

Cubanismo Vineyards

1754 Best Road NW, Salem OR | 503.588.1763

www.CubanismoVineyards.com



REGISTRATION OPENS JANUARY 15TH FOR RETURNING STUDENTS & FEBRUARY 1ST FOR NEW STUDENTS

CHILDREN'S EDUCATIONAL THEATRE

www.cetsalem.org

Acting • Singing • Dancing • Improv
Mime Troupe • Stage Combat
Set-Design • Lighting & Sound
Costuming • Make-up & more

Our 2019 Season Runs
From June 24th - July 27th

Enriching Kids' Lives Through Theatre Arts!

she could not resist the urge to make her acting debut. She will continue to pursue acting and perhaps marry her two passions of music and theater together. Until then, she is hungry to show you her “true self.”

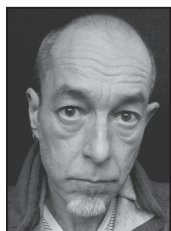


Johnathan Partridge

Seward

Johnathan is new to Pentacle Theatre. He performed in eight shows at Corban University, including *Arse-*

nic and Old Lace, *Much Ado About Nothing*, and *Camelot*. He would like to thank his family back in Washington, his girlfriend, who is playing Mina, and all the friends who come to see the show.



Anthony J. Redelsperger

Dracula, as older

Anthony has a long portfolio of performances in theater productions since the early 70s and films and

music videos since the 80s. His most recent appearance at the Pentacle Theatre was as Ross in *The Elephant Man*.



Order Online @
psofsalem.com

UPCOMING AUDITIONS

<i>Distracted</i>	Oct. 20
<i>The Producers</i>	Dec. 8

More info at 503-485-4300 or online at pentacletheatre.org

LAW OFFICE OF EDEN ROSE BROWN

Supporting the Arts since 1979

ESTATE AND LEGACY PLANNING

Preserving family wealth and harmony for generations

“It’s not about what you own, it’s about what you value . . .”

Salem | Portland | Bend 503-581-1800 www.EdenRoseBrown.com



Kristine Rosentrater
Vixen

This is Kristine's Pentacle Theatre debut. She has taken Jo Dodge's acting workshop. Married with four kids,

Kristine's hobbies include changing diapers, folding laundry, dramatic readings of bedtime stories, and the occasional kissing of boo-boos.



Erik Vigeland
Jonathan Harker

This is Erik's third show at Pentacle Theatre, having recently played Max in *Cabaret* and ensemble in *Spamalat*. In addition to his

newfound love for theater, he is an avid reader and enjoys playing and listening to music. His aspiration is to do all these things simultaneously while sipping Mai Tais with his sweetheart Rie on a beach in Hawaii. Donations are always accepted!

**TO LEARN ABOUT
SPONSORING A
PENTACLE PRODUCTION,
CALL 503-485-4300.**

Connecting you with your clients

- Printing – Offset and Digital
- Web and Technology Services
- Mailing and Inserting Services
- Specialty Projects and Services

SELECT
IMPRESSIONS
TOTAL VISUAL SOLUTIONS

For more information
please contact:

Renee Campbell
503-304-3525

renee@selectimpressions.com

www.selectimpressions.com

2215 Claxter Road NE, Salem, OR 97301



Salem-Keizer
(503) 370-7520

Turner-Jefferson
(503) 743-4646

Aumsville-Stayton
(503) 749-4646

Precision Towing & Recovery

*pentacle
theatre*

and Michael and Beverly Carrick

Proudly Present

Special event!

VIRGINS to VILLAINS

My Journey with Shakespeare's Women



Written and performed by Robin Goodrin Nordli.

On Pentacle's Stage, Nov. 26 at 7:30 pm

Talk Back and Reception to follow in Theatre Lobby

Tickets \$35 Adults and \$25 Students

Ticket Office Location

145 Liberty St. NE, Suite 102,
Downtown Salem

(503) 485-4300

Pentacle Theatre Location

West of Salem off Hwy 22
at 324 52nd Ave. NW

www.pentacletheatre.org



*Pentacle
Theatre*

Opening Night
Meet & Greet

catered by:

BLACK SHEEP CATERING

www.blacksheeporegon.com ♦ 503-385-1909 ♦ orders@blacksheeporegon.com
2550 19th St. SE, Salem, OR 97302

Bright Lights Society

*Honoring the generous individuals who make a provision
in their estate plans for Pentacle Theatre:*

Pamela Abernethy & Chris Fletcher

Linda Gilbert

Ed Kramer

Jeanne M. Miller

Larry Roach

Laurelyn R. Schellin

If you have included Pentacle Theatre in your estate plans, we'd like to know and honor you here.

Please contact Executive Director Lisa Joyce at 503-485-4300 or lisa@pentacletheatre.org.

PENTACLE THEATRE LIFETIME MEMBERS

Every five years the Pentacle Theatre Governing Board honors as Lifetime Members five people who have been active in Pentacle Theatre for at least 20 years. We also remember fondly those Lifetime Members who are no longer with us.

LIFETIME MEMBERS

*Pamela Abernethy • Dick Bond • Benny Bower • Robin Bower • David Cristobal
Maggie Dayton • Jo Dodge • Chris Fletcher • Ron Fox • Ken Hermens • Robert Herzog
Cec Koontz • Louise Larsen • Dave Leonard • Katie Lindbeck • Marian Milligan
Debbie Neel • Alice Norton • Larry Roach • Jeff Sanders • Pat Schmidt • Ed Schoaps
Susan Schoaps • Eloise Smith • Larry Stevens • Kathy Straton • Faye Pitman Trupka
Cherie Ulmer • Madison Vick • De Zajic • Tony Zandol*

IN LOVING MEMORY

*Wayne Ballantyne • Dean Bartell • Jack Bellamy • Dr. E.B. Bossatti • Edith Bossatti
Virginia Choate • Ken Collins • Bill Cross • Phyllis Cross • Dave Davis
Rose Ann Hansell • Mrs. Ray Loter • Peg Pink • Bob Putnam • Margaret Ringnalda
Murco Ringnalda • Dick Schmidt • Helen Shepard • Meryl (Bill) Smith • Barbara Sullivan
Tom Ulmer • Claytene Vick • Stephen Warnock • Rollie Zajic*

FROM THE OFFICE • • • • •

hope by now you've received your season ticket brochure and are completing the paper work to renew an existing subscription or become a new subscriber.

You may have noticed that the 2019 season presents eight new-to-Pentacle productions. Those eight shows plus our fundraiser production, *The Little Mermaid*, make up our 65th anniversary celebratory year.

Of the eight shows on our 2019 regular season, just one is a traditional drama: *Mothers and Sons*. Two shows—*Distracted* and *Yellow*—explore the nexus of comedy and drama. The remainder of the season features a variety of comedies selected to entertain and delight our patrons, including our two musicals: *The Producers* and *The Great American Trailer Park Musical*.



Lisa Joyce

LOOKING AHEAD

While we're selling 2019 season tickets, we're beginning the 2020 season selection process. For those who want to know more about how a Pentacle Theatre season comes to be, the following provides a brief overview of our season selection process. We rely on volunteers to craft our season during a months-long undertaking of reading, debate and discussion. Pentacle Theatre's season selection considers a wide range of perspectives, which reflect the many facets of our diverse and wonderful Pentacle Theatre community.

2020 STARTS NOW

The process begins in September with a call for applications for the Play Reading Committee Chair. The board's seeks an individual who is knowledgeable about our theater's unique limitations and strengths can lead a team of volunteers through the time-sensitive process.

Once the board appoints a chair, we recruit committee members. Members must commit to reading many (as a group, more than 100) plays over the course of a few months, including those suggested by the broader Pentacle Theatre community.

In January, the committee and the board host a kick-off meeting for interested and qualified directors to review the process of selecting a season.

MUSICALS

Musical selections happen outside the Play Reading Committee, with the board making its choices in March so that the committee knows what will be on the season as they do their work.

PLAY READING CONTINUES

In March, the committee prepares a "warm list" of plays that have momentum among the committee members. The board reviews that list and provides feedback to the Play Reading Committee chair.

In April, after further discussion and winnowing of the number of plays, the committee reveals a shorter "hot list" at another special meeting. Directors may propose up to three plays from the hot list.

In May, the governing board hears directors' proposals for plays on the hot list. After hearing the proposals, the board determines which plays will go forward in the process.

In June, the committee presents at least three alternative seasons based on the plays the board approves for inclusion. The board then selects the final season and announces it at the 2019 Salem Art Association's Art Fair and Festival.

After a short break, the process will begin to build a 2021 season. If you're interested in being a part of this process, let me know!

Lisa Joyce, Executive Director

Pentacle Theatre Season 2019

Season Kickoff Fund-Raiser

Disney's The Little Mermaid * January 4 – January 6

By Alan Menken, Howard Ashman, Glenn Slater, and Doug Wright.

Directed by Karen McCarty Performed at the Elsinore Theatre.

SPONSORED BY THE COMPTON FAMILY FOUNDATION.

Distracted * January 18 – February 9

By Lisa Loomer. Directed by Lucas Hill and Isaac Joyce-Shaw.

The Producers * March 1 – March 23

By Mel Brooks and Thomas Meehan. Directed by Robert Salberg.

SPONSORED BY ERIK AND LAURA DAVIS.

Yellow * April 12 – May 4

By Del Shores. Directed by Heather Dunkin Toller.

Fools * May 24 – June 15

By Neil Simon. Directed by Dani Potter.

SPONSORED BY DUCHESS AND THE MUNCHKIN.

Jest A Second! * July 26 – August 17

By James Sheridan. Directed by Valerie Steele.

SPONSORED BY RICH FORD, WINDERMERE REAL ESTATE.

The Great American Trailer Park Musical September 6–28

By David Nehls and Betsy Kelso. Directed by Jill Sorensen.

Mothers and Sons * September 18 – October 9

By Terrence McNally. Directed by Jo Dodge.

SPONSORED BY THE PAUL C. AND ROBIN E. BOWER FAMILY TRUST.

Dashing Through the Snow

November 29 – December 21

By Jessie Jones, Nicholas Hope, and Jamie Wooten. Directed by Deborah Johansen.

SPONSORED BY THE GLANTZ LAW GROUP.



GENERAL INFORMATION • • • • •

Mission Statement

Pentacle Theatre provides community members a collaborative opportunity to create and experience theater in an atmosphere of respect, support, and enjoyment.

TICKET INFORMATION

Tickets for upcoming productions are available at Pentacle Theatre's ticket office, 145 Liberty St. NE, Suite 102, Salem, OR 97301, or by calling 503-485-4300. Open Monday through Friday, 10 a.m.–4:30 p.m. Prices range from \$23.50 to \$34, depending on date and type of production. In partnership with Salem For All, Pentacle Theatre offers half-price tickets to individuals who have an Oregon Trail card. Handling fees may apply. Tickets are sold at the theater box office 45 minutes before each performance. Tickets are also available at pentacletheatre.org.

LATECOMERS POLICY

Pentacle Theatre productions will begin on time. If you do arrive late, you will be directed to the lobby where you can watch the show on a monitor. At intermission you will be ushered to an available seat. If you leave your seat during the performance, you will not be reseated until intermission. Sorry, no refunds for latecomers.

BEVERAGES AND SMOKING

Beverages are available for purchase in the lobby. Only bottled water and beverages in cups with lids and straws are allowed in the auditorium. No cans, glass bottles, or food is permitted at any time. Smoking is allowed only in designated areas on the lower deck.

PENTACLE THEATRE COURTESY

Cameras (with or without flash) and recording devices are strictly prohibited. Please turn off beepers and cell phones during the performance.

ADVERTISING

Advertise in Pentacle Theatre programs! All proceeds benefit Pentacle Theatre. Call the business office for more information: 503-485-4300, or stop by our business office at 145 Liberty St. NE in historic downtown Salem.

HOW TO REACH US

Pentacle Theatre tickets and business office:
145 Liberty St. NE, Suite 102, Salem, OR 97301;
503-485-4300; Mon.–Fri. 10 a.m. – 4:30 p.m.

Pentacle Theatre lobby:
324 52nd Ave. NW, Salem, OR 97304;
503-364-7200.

Online: pentacletheatre.org.

MANY, MANY THANKS...

To our volunteer house managers, box office personnel, bartenders, concession attendants, and ushers. Pentacle Theatre could not be successful without the continued and dedicated help of our community.

PENTACLE THEATRE GOVERNING BOARD

Pentacle Theatre is an established not-for-profit theater company, providing an eight-play season. A nine-member governing board assisted by committee chairpersons and countless other volunteers run the theater. Membership is open to all.

2018 GOVERNING BOARD AND STAFF

President	David Ballantyne
Vice President	Matt Woolsey
Secretary	Mary Ann Potter
Treasurer	Jill Sorensen
Members-at-Large	Ed Arabas Jodi Deming Chris Fletcher Lisa Godwin Jon Stuber
Executive Director	Lisa Joyce
Technical Director	Chris Benham
Facility Maintenance	Jordan Mackor
Ticket Office Representative	Sarah Braff
Administrative Assistant	Liz Hess

YOU MAKE THE DIFFERENCE! ● ● ● ● ●

List as of September 11, 2018. Ticket sales alone do not cover the cost of our productions. Your membership and donations help make this theater possible. Thank you!

EXECUTIVE PRODUCER [\$2000+]

Autzen Foundation
Mr. & Mrs. Maurice Collada
Compton Family Foundation
Erik & Laura Davis
Herbert A. Templeton Foundation
Kelli & Ron Jaecks
John & Carolyn Lindbeck
Patrick Moser
Oregon Arts Commission
Barbara & Bruce W. Thompson

PRODUCER [\$1000+]

Allied Video Productions
B.E. Knudson Charitable
Foundation
Beverly & Michael Carrick
Cherie & Craig Cline
Bonnie & Zell Giles
Rhea & Rick Glantz
Lisa Joyce
Pioneer Trust Bank Foundation
Salem Foundation
Betsy & Richard Scott

DIRECTOR (\$500+)

Anonymous
Arabas Family
Michael Beyrouthy
Penny Blackwell
Forrest A. Colling &
Jean M. Linck
Chris Fletcher &
Pamela Abernethy
Sally & Ray Hollemon
In Memory of Christine Sproul
Lisa & Marty Johnson
Karen & Willy Kohne
Louise E. Larsen
Katie Lindbeck
Betsy McDowell
The Meltzer Family
Alice Mary Norton
Don & Liz Rogers—
Rogers Entertainment Group
Peter M. Ronai
Salem Health
Geri Lyne & Jeff Sanders

Don Vanlue
Katie & Matt Woolsey

ASSISTANT DIRECTOR (\$250+)

Gayle McMurria & George Bachik
Pam Baldwin
Sherry & Alan Bennett
Virginia & Alex Bourdeau
Nancy & Doug Bovee
Jeanne & Bill Dalton
Amy & Dan Dixon
Carolyn & Bob Engle
Diane & Michael Francis
Jo Rita Gann
Lisa Godwin & Rick Segal
Jody & Mark Gordon
Linda & Dick Haglund
Carolyn & Bob Howard
Sherril & Lynn Hurt
Katie & Laslo Kolta
Susan & David Laing
Ellen Langsather
Fran Lattin
Ken Limbocker
Jackie B. Miller
Nancy & Kevin Moen
Beauty and the Beast
Cast and Crew
Pat Moss
Beverly North
Jon & Ginny Oshel
Bonnie & Chuck Peter
Louise & Keith Putman
Kara Quello & Karl Anderson
Kristin Ramstad
Connee & Robert Reau
Kay & Scott Reichlin
Ron Schaadt
Pam Scharf
Kathy Ann Smith
Steven K. Wollenburg
Penny & Bill Wylie

LEADING ACTOR (\$100+)

Anonymous
Sandra & William Albright
Edna & Richard Anderson
Thomas P. Augustyn
Gordon & Pat Bacon

Jan & Dan Bailly
Kay Balke
Chesta Bauer
Katy & Charles Bayless
Sibylle & Richard Beck
Becky Beckmann
Becky & Christopher D. Benton
Leora Berger
Jenni Bertels
Robin & Benny Bower
Janan & Gary Brandt
James C. Brown
Gary & Diane Buckley
Tracie B. Burger
Carol & Dennis Busby
Linda Cashin & Brian Moyer
Susan F. Christensen
Diane & Aaron Clingerman
Sandra & Roger Colburn
Carol Coley & Ron Boucher
Linda D. Cress
Dennis & Barbara Curtin Miles
Laura Davis
Edna Denton & Carel Dewinkel
Patricia Ehrlich & James Willhite
Joyce & Mark Eklund
David & Sue Erb,
in Memory of Donna Moen
Oddny & Brad Everson
Beverly & Ralph Faulkner
Pat & Chuck Fisher
Janet & Charles Foster
Albert & Ginny Furtwangler
Holly Giesbrecht
Brandon Gitchel
Rhea & Rick Glantz, in celebra-
tion of Chris & Angie Best
Stanley Norman Graven
Doug Gray
John C. Guevara
Deb & David Hackleman
Walter Haight
Cora A. Hallauer &
Otto M. Friedrich
Debby & Mark Hamlin
Kathryn Hanel & Steve Passantino
Lois Hanson
Ann & Dave Hanus
Lois Harris

Janice M. Henry
Elizabeth & Scott Hess
Janeen Hilbrink
Gloria & Arthur Hill
Linda & Joe Hillesum
Sheila K & John L. Hochstetler
Cathleen Hockman-Wert
Gloria & Alan Holland
Lyndsey & Jerry Houser
Lyndsey & Jerry Houser,
in Memory of Peg Pink
Jay Howe & Janet Gros Jacques
Michael & Diane Jaffe
Julie & Frank Jellison
Kimberly A. Jones
Catherine Jossis
Janet & Richard Kahler
John & Linda Kaufmann
Frank & Bev Knox
Cec Koontz
Mary & Larry Krumdieck
Ronni Lacroute
Nan & Kenn Lehto
Judith & Greg Linder
Edna & Vic Lippert
Ann & Joe Little
Donna Marr
Sandra & Keith Martin
Sally McBride
Rus McCracken
Cynthia Meduri
Lynn & Mel Mogster
Ruth & Roger Monette
Sharon L. Moore
Max Morter & Charlie Morter
Beauty and the Beast Cast & Crew
Bonita & Leonard Nelson
Fawna C. O'Black
Andrea G. O'Donnell
Liz & Don Oswalt
Stephanie & Tyler Palmbiad
Kathy & Bruce Patterson
Karen Phares
Elizabeth M. & Gary W. Pickett
Sara G. Pickett
Jackie Pierce
Susan & Richard Ray
Rosanne Richard
Joan Robinson
Susan Saalfeld
Lauren Saucy
Donald & Kathy Saviers

Cynthia & Patrick Schmitz
Curt Shaw
Stuart R. Shaw
Lise Shearer & Diane Mitchell
Lynda & Marvin Sloan
David Smedema
Janine Smith
Katrine & Guy Smith
Jim & Leta Gay Snyder
Norma Jean Standlea &
Hank Keeton
Ellen & Tom Stevens
Ron Stewart
Joanna & Ronald Stout
Toru & Susan Tanabe
Mary A. Tibbot
B.J. Toewe
Beverley Ward
Nathan & Tracy Webber
Juanita & Lloyd Weigel
Lynn & Bennett A. Wight
Aaron & Vickie Yusem
Leslie & Bob Zeigen

SUPPORTING ACTOR (\$50+)

Anonymous
Karyl J. Allen
Ray and Louise Ballantyne
Bill & Anita Blaumer
David Bliss
Randi H. Blumenson
Patricia H. Bowen
Sarah Braff
Donna & Merv Brenes
Vicki L. Brink
Archie & Linda Brown
Mar'Sue & Perry Brown
Marlene Buker
Florence & David Carter
Kay & Philip Cogswell
LaVeta Day
Sharon & Marion Dearman
Lois & Dale Derouin
Gail & Bob Dettwyler
Annegret Disterheft
Anne M. Dooley
Gail Elliott
Susan Elliott
Karen & Bill Farmer
David L. Fleming
Leola & David Flocker
Doris & Walt Friday

Leslie & Bill Glassmire
Gerald & Louise Green
Frank & Pat Gruber
Mark & Allana Hadden
Dorothy Hart
Trish Hatfield & Gordon Wogan
Franca Hernandez
Brett Hochstetler
Billie Houghton
Karen Houle
Eileen Cotter Howell &
Bill Howell
Gail & Roland Isaac
Lesley Lynn Johnson
Wendy & Jack Johnson
Ruth & Fred Kaser
Sylvia Kline
Gail & Gary Knighten
Corinne Lockett
Carolyn & Tom Lulay
Char & Lee R. Mayer
Muriel Meyer
Mary Lou Obloy
Leslie Ann O'Brien
Sandy & Gary Onstot
Nancy W. Orcutt
James Owens
Karen Paillette & David Peterson
Richard Poudrier &
Barbara Mahnu
Ken Ray in honor of Susan Ray
Lorita & Jack Ray
Lester Reed
Joseph F. Rockwood
Katie & Bruce Rose
Michael & Leslie A. Roth
Cesie & Tom Scheuermann
Loriann Schmidt
Bob & Suzanne Sharp
Fred Eugene Shaub
Kristie & Delmar Souther
Paul Spitzer
Bryan & Judy Thoet
Penelope White
Jeff Witt & Jon Stuber
Berta & Jim Wood
Sandra Woodland
Wilma Zicker
Elizabeth & James Zielinski
Thomas & Joyce Zook

**FOR A FULL LIST OF DONORS,
PLEASE VISIT PENTACLETHEATRE.ORG.**

UP NEXT

Little Shop of Horrors • November 9 – December 1

The meek floral assistant Seymour Krelborn stumbles across a new breed of plant he names “Audrey II” after his coworker crush. This foul-mouthed, R&B-singing carnivore promises unending fame and fortune to the down-and-out Krelborn as long as he keeps feeding it blood. Over time, though, Seymour discovers Audrey II’s out-of-this-world origins and intent towards global domination!

Robert Salberg is directing Pentacle Theatre’s production of *Little Shop of Horrors* with the help of assistant director Jill Sorensen, music director Andrea Bean, vocal director Joshua Seitz, and choreographer Geri Sanders. The cast includes Ashley Dankenbring, Myles Fisher, Walter Haight, Taylor Husk, Kirsten DuBrowa Manning, Dawneka Patterson, Claire Snyder, Emma Thurston, and Jeff Witt.

Little Shop of Horrors opens on Friday, November 9, and plays through Saturday, December 1. Tickets are available at the Pentacle Theatre ticket office located at 145 Liberty St. NE in downtown Salem or online at pentacletheatre.org. For more information, contact the Pentacle Theatre ticket office at 503-485-4300. *Little Shop of Horrors* is made possible by the generous sponsorship of Erik and Laura Davis. ☆

*“Yes, there’s
a mammoth,
human-
eating plant
on the stage.
But sincerity and
sweetness rule the
day.”*

—*Cincinnati Enquirer*

