

pentacle  
theatre

A woman with short dark hair, wearing a black lace top and a large black feather boa, is the central figure. She has dramatic eye makeup with purple and blue tones and red lipstick. The scene is lit with strong red light, creating a moody atmosphere. The background is dark.

**SEASON**

---

**2019**

## Don't miss out on the benefits of a season ticket!

**The Best Price:** As a season ticket holder, you will save more than 20 percent of the cost of individually purchased tickets.

**The Best Seats:** We fill your order before any single ticket orders to ensure you have the same seats or better every year.

**Free Exchanges:** If you have a conflict for your regular night, the Pentacle Ticket office will help you exchange your tickets.

**Guarantee:** You won't miss one production. With your ticket already in hand, your eight shows are guaranteed!

## Where to find us

Theater address:  
324 52nd Ave NW  
Salem, OR 97304

Business and Ticket Office:  
145 Liberty St. NE, Suite 102  
Salem, OR 97301

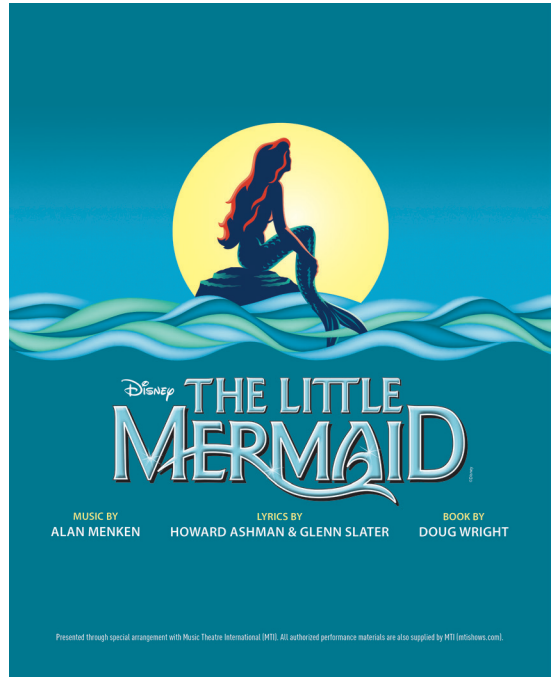
Phone: 503-485-4300

[pentacletheatre.org](http://pentacletheatre.org)



## Winter Fundraiser

~not included with season ticket~



Directed by Karen McCarty

Music by Alan Menken. Lyrics by Howard Ashman and Glenn Slater. Book by Doug Wright.

The classic Disney story focuses on a young mermaid who dreams of a life on land. See all your favorite characters from the animated film.

**Sponsored by The Compton Family Foundation**

**At Elsinore Theatre**

**January 4 to 6**

**Adults: \$35**

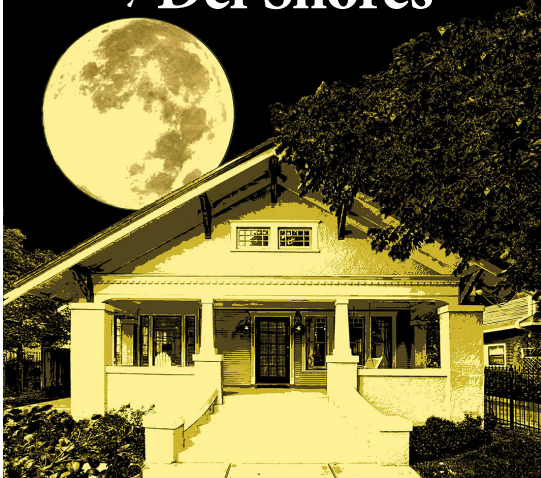
**17 and younger: \$30**





# Yellow

by Del Shores



**By Del Shores**

Directed by Heather Dunkin Toller

We have the perfect family in Vicksburg, Mississippi: Bobby Westmoreland, his wife Kate and their two ambitious high-school aged children. Son Dayne is the football star, while daughter Gracie is an actress. Gracie's best friend is a gay boy, Kendall, at odds with his fundamentalist mother, Sister Timothea. Everything falls apart when tragedy rocks the Westmoreland family. **Yellow** explores the themes of cowardice, intolerance, family secrets and forgiveness.

**April 12 — May 4**

# FOOLS



by Neil Simon

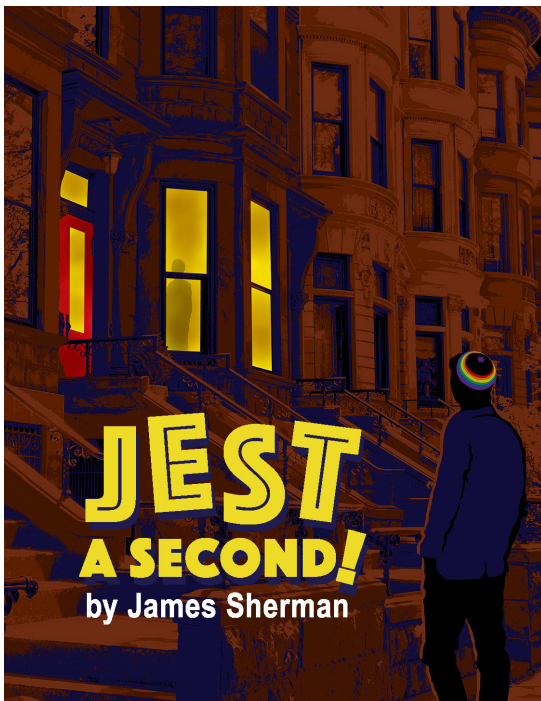
**By Neil Simon**

Directed by Dani Potter

Leon Tolchinsky is ecstatic! He's landed a terrific teaching job in a small town. When he arrives, however, he finds people sweeping dust from the stoops back into their houses and farmers milking cows upside down to get more cream. The town has been cursed with chronic stupidity for 200 years, and Leon's job is to break the curse. Friendships form, love prevails, and the sheep are always missing in this fast-paced comedy.

**Sponsored by Duchess and the Munchkin**

**May 24 — June 15**



## By James Sheridan

Directed by Valerie Steele

Sarah and Bob, expecting their first child, are hosting a birthday party for Sarah's mother. Sarah's brother, Joel, arrives early to tell Sarah some news he's put off telling anybody: He's gay and has picked this evening to come out to his family. Realizing that no one is quite ready for Joel's big reveal, Bob decides some deception is in order. The complications pile up in hilarious layers and build to a heartwarming conclusion.

**Sponsored by Rich Ford,  
Windermere Real Estate**

**July 26 — Aug. 17**



## By David Nehls & Betsy Kelso

Directed by Jill Sorensen

There's a new tenant at Armadillo Acres—and she's wreaking havoc all over Florida's most exclusive trailer park. When Pippi, the stripper on the run, comes between the Dr. Phil-loving, agoraphobic Jeannie and her tollbooth collector husband, the storms begin to brew. They say home is where the heart is, and this show is all about loving where you're from, being who you are and living your life with no apologies.

Music and Lyrics by David Nehls, book by Betsy Kelso

**Sept. 6 — 28**

# Mothers and Sons

by Terrence McNally



## By Terrence McNally

Directed by Jo Dodge

At turns both funny and powerful, *Mothers and Sons* portrays a woman who pays an unexpected visit to the New York apartment of her late son's partner, who is now married to another man and has a young son. Challenged to face how society has changed around her, she revisits the past, sees generations collide and begins to see the life her son might have led.

**Sponsored by the Paul C. and Robin E. Bower Family Trust**

# DASHING THROUGH THE Snow



BY JESSIE JONES,  
NICHOLAS HOPE,  
JAMIE WOOTEN

## By Jessie Jones, Nicholas Hope, Jamie Wooten

Directed by Deborah Johansen

It's four days before Christmas in the tiny town of Tinsel, Texas, at the Snowflake Inn. Trina, the harried yet upbeat innkeeper of this B&B, has more than she can handle coping with her eccentric, nuttier-than-a-fruitcake guests. They include Mrs. Claus and one of Santa's elves, a troupe of pompous B-level actors, a feuding family and a wacky wedding party. Enjoy this fun-filled way to ring in the Christmas season.

**Sponsored by Glantz Law Group, LLC**

**Oct. 18 — Nov. 9**

**Nov. 29 — Dec. 21**

# Order your season tickets today

(ONE ORDER FORM PER HOUSEHOLD)

Renew by: **October 31.** New subscriber deadline: **November 30.**

Name: \_\_\_\_\_ Phone: \_\_\_\_\_

Address: \_\_\_\_\_ City/State: \_\_\_\_\_

Email: \_\_\_\_\_ ZIP: \_\_\_\_\_

## Renewing Subscribers:

- ☐ I would like to keep the same seats.
- ☐ I would like to make a change, please contact me.
- ☐ I would like to pay half now, half on Oct. 31. **(Credit card only)**

## New Subscribers: Please indicate your first and second choices:

- |                                                             |           |       |
|-------------------------------------------------------------|-----------|-------|
| <input type="radio"/> Opening Friday (with post-show party) | 7:30 p.m. | \$170 |
| <input type="radio"/> Wednesday                             | 7:30 p.m. | \$140 |
| <input type="radio"/> Thursday                              | 7:30 p.m. | \$140 |
| <input type="radio"/> Friday                                | 7:30 p.m. | \$145 |
| <input type="radio"/> Saturday                              | 7:30 p.m. | \$145 |
| <input type="radio"/> Sunday Matinee                        | 2 p.m.    | \$150 |

## Membership (see website for benefits)

- ☐ \$45 Partner (name)
- ☐ \$25 Individual
- ☐ \$15 Student

## Pentacle Theatre with a donation

- ☐ Executive Producer \$2,000+
- ☐ Producer \$1,000-\$1,999
- ☐ Director \$500-\$999
- ☐ Assistant Director \$250-\$499
- ☐ Leading Actor \$100-\$249
- ☐ Supporting Actor \$50-\$99

## Payment

Season Tickets: \_\_\_\_\_ seats = \_\_\_\_\_

Membership: \_\_\_\_\_ = \_\_\_\_\_

Donation: \_\_\_\_\_ = \_\_\_\_\_

Fundraiser Tickets: \_\_\_\_\_

Adults, \$35 x \_\_\_\_: \_\_\_\_\_ = \_\_\_\_\_

Youth, \$30 x \_\_\_\_: \_\_\_\_\_ = \_\_\_\_\_

Handling Charge: \_\_\_\_\_ + \$8.00

**Total:** \_\_\_\_\_

## Disney's The Little Mermaid at Elsinore Theatre (not included in subscription)

### Select a date and time

- ☐ January 4, 7:30 p.m.
- ☐ January 5, 2 p.m.
- ☐ January 6, 2 p.m.

## Payment Method

☐ Enclosed is a check

☐ Visa

☐ Mastercard

☐ Discover

☐ Amex

# \_\_\_\_\_

Exp. Date: \_\_\_\_\_

CVV:



# Save the date!

Please plan to join us for our 65th anniversary celebration.

**Saturday, July 13, 2019**  
**Salem Convention Center**

Tickets on sale now: [pentacletheatre.org](http://pentacletheatre.org).

**Business & Ticket Office**  
**145 Liberty Street NE**  
**Suite 102**  
**Salem, OR 97301**

**503-485-4300**

**[www.pentacletheatre.org](http://www.pentacletheatre.org)**